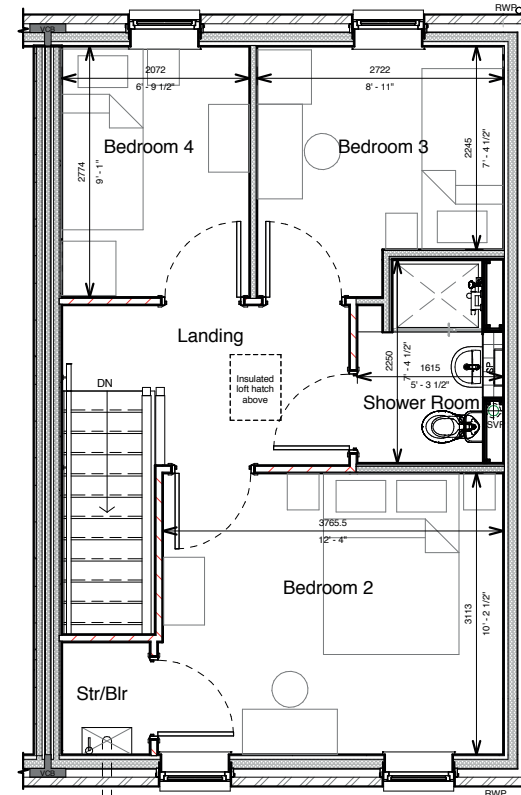
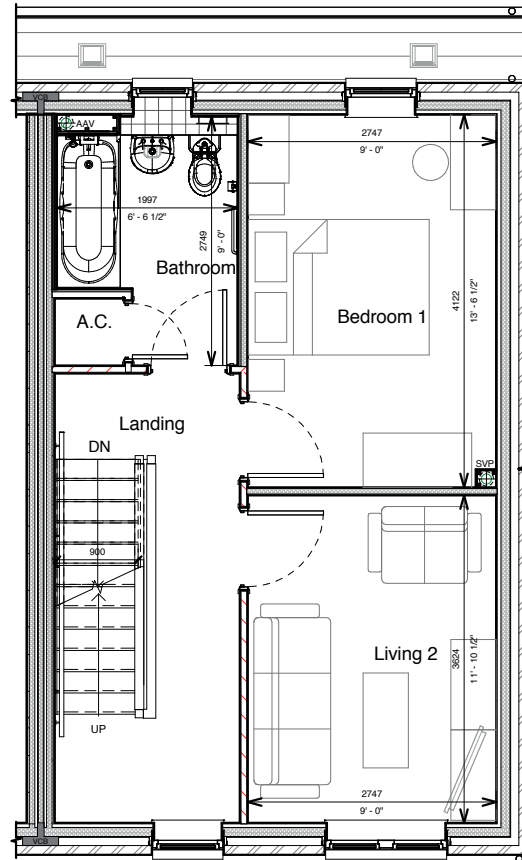
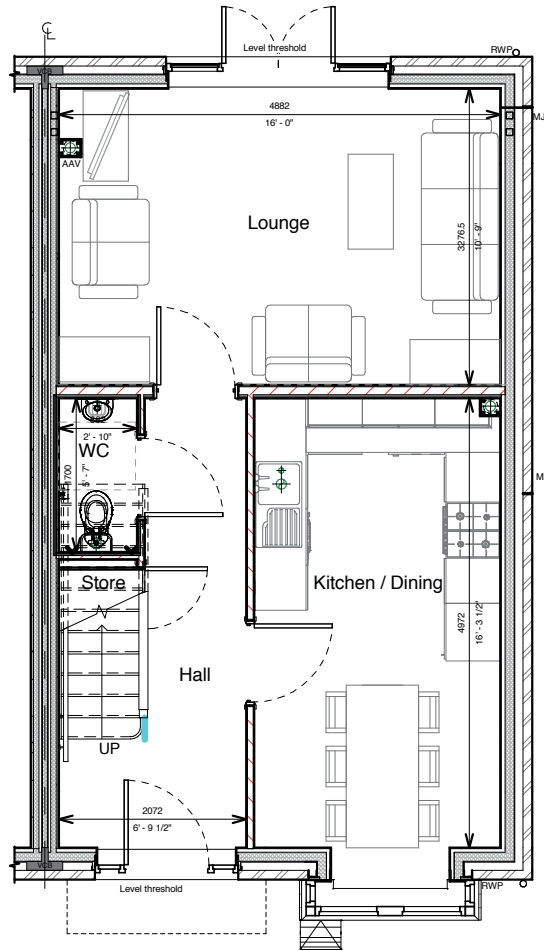


HOUSE TYPE

4 BED (TYPE F1)



GROUND FLOOR FIRST FLOOR TOP FLOOR



- LOUNGE**  
4882mm x 3276.5mm
- KITCHEN/DINING**  
4972mm x 2810mm
- LIVING 2**  
3624mm x 2747mm
- BEDROOM 1**  
4122mm x 2747mm
- BEDROOM 2**  
3765.5mm x 3113mm
- BEDROOM 3**  
2722mm x 2245mm
- BEDROOM 4**  
2774mm x 2072mm

A JOINT VENTURE COMMUNITY PROJECT IN PARTNERSHIP WITH  
**LOVELL** **Tirion.** **Cadwyn**